

**THE COUNCIL OF THE BOROUGH OF MILTON KEYNES  
(THE COUNCIL OF THE BOROUGH OF MILTON KEYNES (CENTRAL MILTON  
KEYNES) (ON-STREET FREE AND LIMITED PARKING PLACES AND WAITING  
RESTRICTIONS) ORDER 2002) VARIATION ORDER 2009**

The Council of the Borough of Milton Keynes ("the Council") in exercise of the powers of the said Council under Sections 45, 46, 49, 53 and Part IV of Schedule 9 of the Road Traffic Regulation Act 1984 ("the Act of 1984") and of all other enabling powers and after consultation with the chief officer of police in accordance with Part III of Schedule 9 hereby makes the following Order: -

**PART 1**

**IMPLEMENTATION, CITATION AND DEFINITIONS**

1. This Order shall come into operation on the 5<sup>th</sup> day of May 2009 and may be cited as "The Council of the Borough of Milton Keynes (The Council of the Borough of Milton Keynes (Central Milton Keynes) (On-Street Free and Limited Parking Places and Waiting Restrictions) Order 2002) Variation Order 2009".
2. Any reference in this Order to any enactment shall be construed as a reference to that enactment as amended by any subsequent enactment.
3. The plans annexed to this Order identify the lengths of road subject to this Order, provided that where there is any inconsistency between the plans and the Articles it is the wording of the Articles which shall prevail.
4. The plans annexed to this Order are hereby annexed to The Council of the Borough of Milton Keynes (Central Milton Keynes) (On-Street Free and Limited Parking Places and Waiting Restrictions) Order 2002 and form part of the Order.

**PART 2**

**VARIATIONS**

5. The Council of the Borough of Milton Keynes (Central Milton Keynes) (On-Street Free and Limited Parking Places and Waiting Restrictions) Order 2002 ("The Principal Order") is varied as provided by the following provisions of this Order:-
  - 1) The following additional Schedule is inserted into the Principal Order as follows:

**SCHEDULE 5 PART C**

**LIMITED WAITING EVERYDAY OF THE WEEK 11.00 AM TO 6.00 PM  
1 HOUR, RETURN PROHIBITED WITHIN 2 HOURS**

- 2) The following additional Article will be inserted into the Principal Order as follows:

33b. No person shall except with the permission or under the direction of a police officer in uniform or a traffic warden cause or permit any vehicle to wait in any of the parking places in those lengths of road specified in Schedule 5 Part C hereto between the hours of 11.00a.m. and 6.00p.m. on any day of the week:

(1) for a longer period than 1 hour; or

(2) if a period less than two hours has elapsed since the termination during the said hours of the last period of waiting (if any) by that vehicle in the same parking place in the same length of road.

A vehicle which is present in any parking place in any length of road specified in Schedule 5 Part C hereto at the commencement of the hours of operation of any restrictions imposed by this Order shall be deemed to have been left in that parking place in that length of road at the commencement of that period of operation of the restriction in question.

- 3) The following wording in Article 37 of the Principal Order will be revoked and replaced as follows:

"Nothing in Articles 6 and 17 above shall render it a contravention of this Order to cause or permit a vehicle to wait in any of the lengths of road or any of the parking places in those lengths of road specified in Schedules 1, 2, 3, 4, 5 Part A, 5 Part B and 5 Part C for so long as may be necessary:".

6. The following item is to be inserted into Schedule 5 Part B of the Principal Order as follows:

1) ELDER GATE (WITHIN STATION SQUARE)

LW6 The northeast side of the south-western carriageway in front of the Railway Station south-east of the walkway between Midsummer Boulevard and the Railway Station.

7. The following items are to be inserted into Schedule 5 Part C of the Principal Order as follows:

1) WITAN GATE – SOUTH-EAST SIDE

LW7 From a point approximately 43.6 metres south-east of its junction with Midsummer Boulevard for a distance of approximately 15.2 metres in a generally south-easterly direction.

LW8 From a point approximately 82.2 metres south-east of its junction with Midsummer Boulevard for a distance of approximately 15.1 metres in a generally south-easterly

direction.

LW9 From a point approximately 110 metres south-east of its junction with Midsummer Boulevard for a distance of approximately 15.1 metres in a generally south-easterly direction.

LW10 From a point approximately 148.4 metres south-east of its junction with Midsummer Boulevard for a distance of approximately 21.2 metres in a generally south-easterly direction.

**AVEBURY BOULEVARD – NORTH-WEST SIDE**

LW11 From a point approximately 41.5 metres north-east of its junction with Witan Gate for a distance of approximately 21 metres in a generally north-easterly direction.

LW12 From a point approximately 84.5 metres north-east of its junction with Witan Gate for a distance of approximately 21.2 metres in a generally north-easterly direction.

**PART 3**

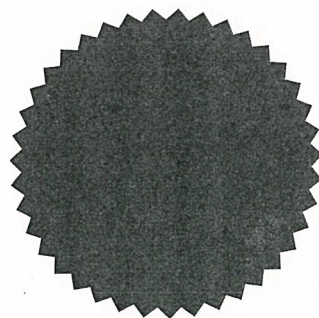
**REVOCATIONS**

8. The following Order IS HEREBY REVOKED to the extent stated below:

**THE COUNCIL OF THE BOROUGH OF MILTON KEYNES  
(CENTRAL MILTON KEYNES) (WAITING AND LOADING RESTRICTIONS)  
ORDER 1999**

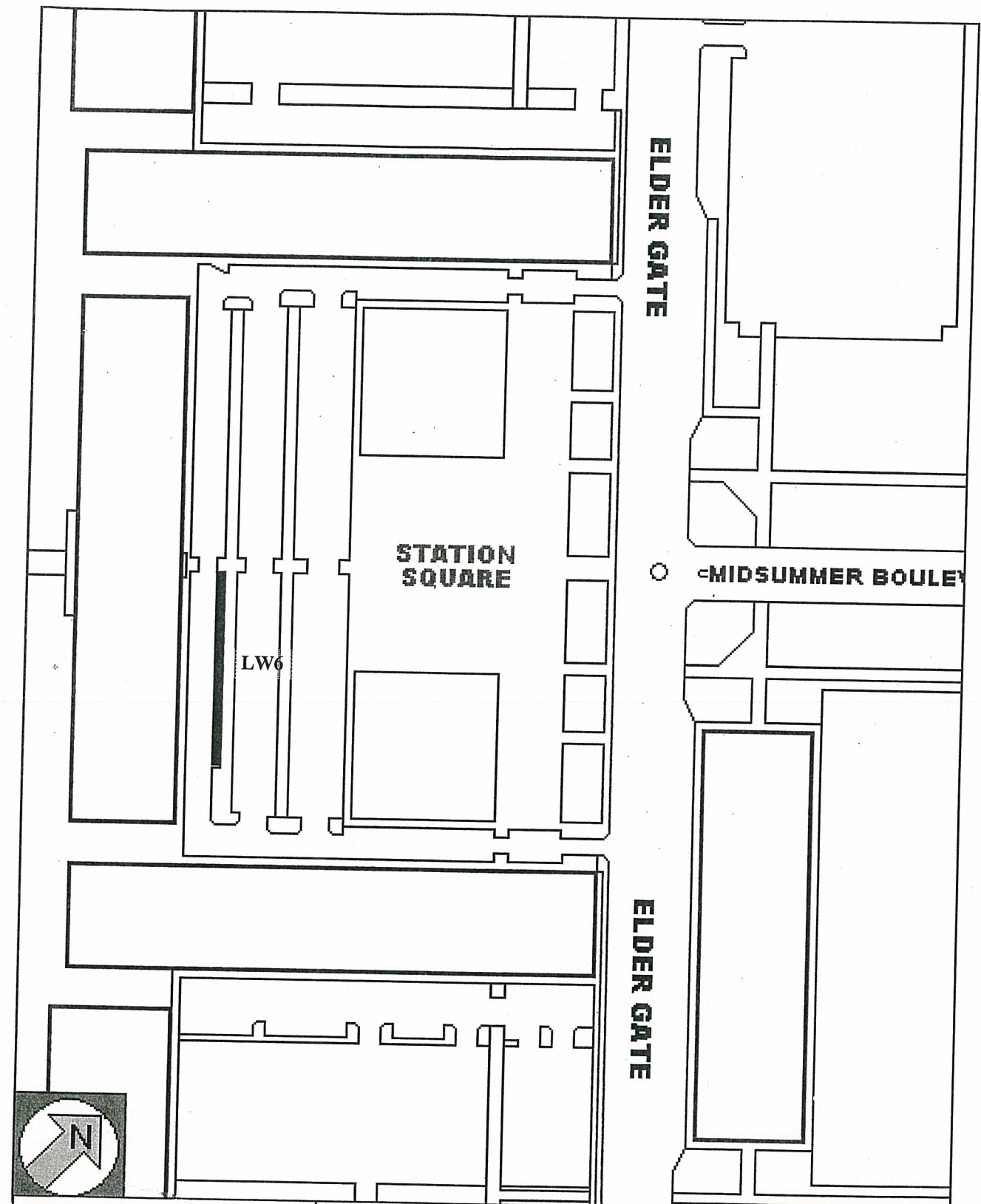
Item NW74 IS HEREBY REVOKED IN ITS ENTIRETY from Schedule 1 Part B.

THE COMMON SEAL of the **COUNCIL OF THE  
BOROUGH OF MILTON KEYNES** was hereunto  
affixed this *30th* day of *April* 2009  
in the presence of :-




  
.....  
HEAD OF LEGAL SERVICES AND MONITORING OFFICER





**Notes:**

-  15 minutes limited waiting  
 No return within 1 hour  
 LW6 TRO reference number

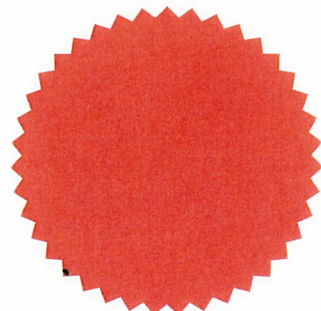
Map referred to in the Council of the  
 Borough of Milton Keynes (The Council  
 Of the Borough of Milton Keynes)  
 (Central Milton Keynes) (On-Street  
 Free and Limited Parking Places)  
 And Waiting Restrictions) Order 2002)  
 Variation Order 2009

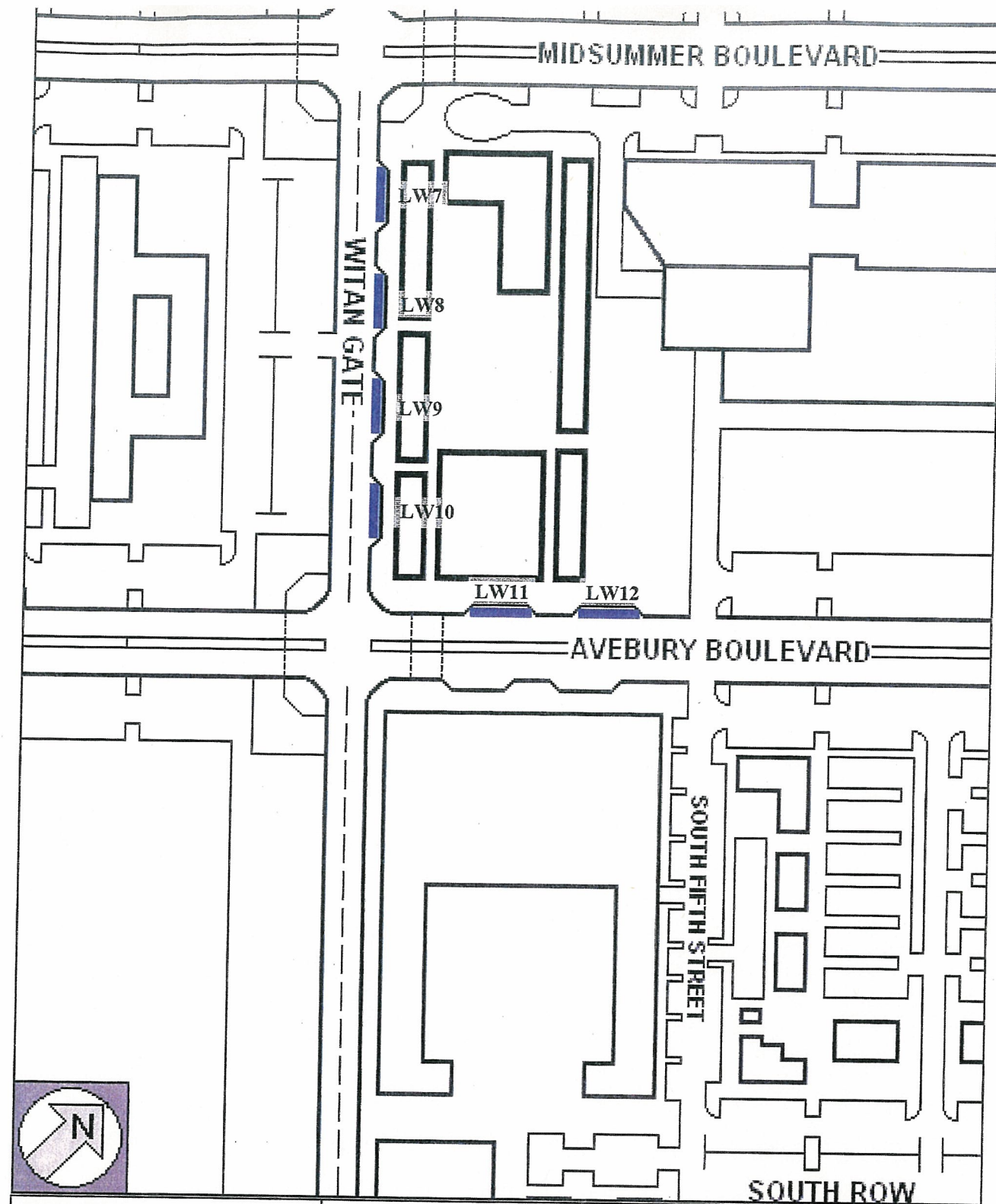
Not to Scale

The common seal of the Council of the  
 Borough of Milton Keynes was hereunto  
 Affixed in the presence of:


*[Signature]*

HEAD OF LEGAL SERVICES AND MONITORING OFFICER





**Notes:**

-  1 Hour limited waiting  
 between 11.00 a.m. and  
 6.00 p.m.  
*Every day*  
 LW7 TRO reference number

Map referred to in the Council of the  
 Borough of Milton Keynes (The Council  
 Of the Borough of Milton Keynes)  
 (Central Milton Keynes) (On-Street  
 Free and Limited Parking Places)  
 And Waiting Restrictions) Order 2002)  
 Variation Order 2009

Not to Scale

The common seal of the Council of the  
 Borough of Milton Keynes was hereunto  
 Affixed in the presence of:

  
 HEAD OF LEGAL SERVICES AND MONITORING OFFICER

